



IXARO NET Transmitter

Configuration of the
Ethernet Interface



3. Configuration of the Ethernet Interface

The IXARO-NET transmitter uses an Ethernet-Interface CSE – M53 from the manufacturer Sollae Systems.



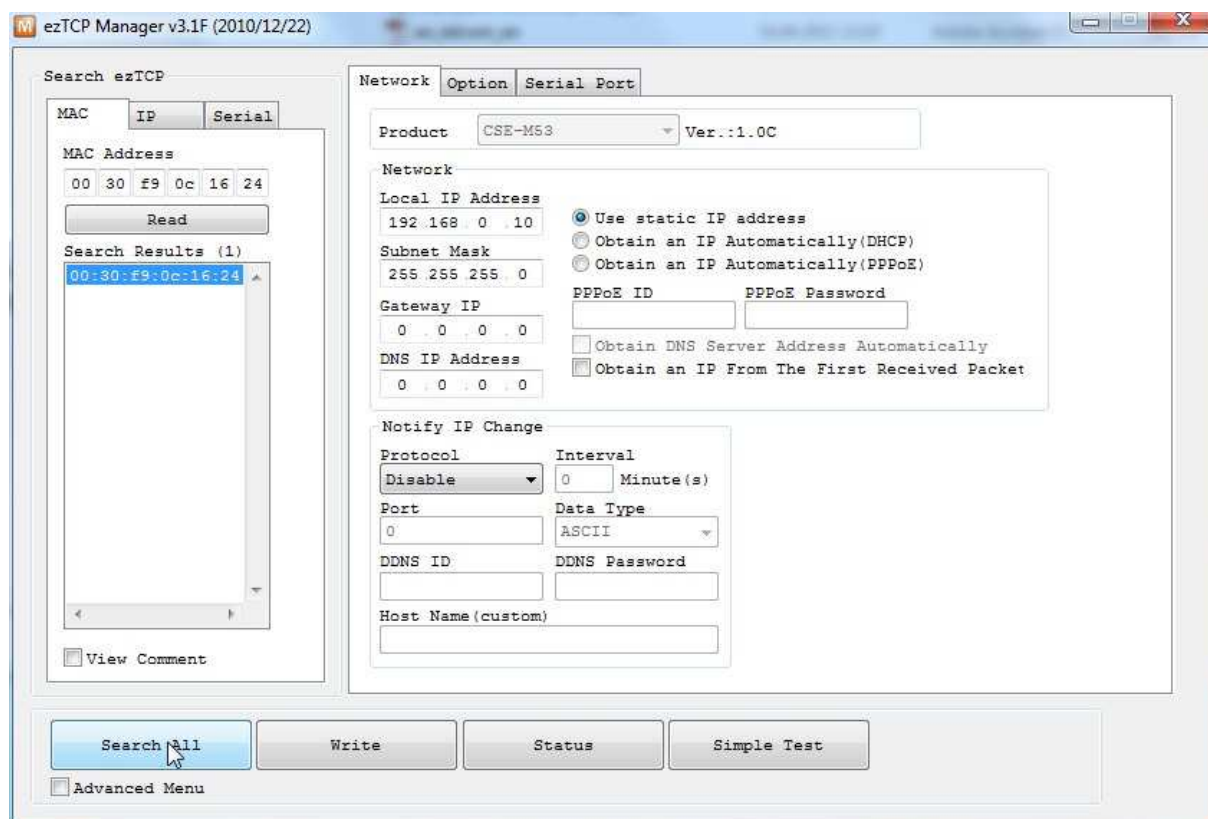
Fig.8 Ethernet-Interface module CSE-M53 in the transmitter. The last six digits of the MAC-address) are printed on the label (0C1624 in this example). The MAC address identifies the Ethernet module within the network. The MAC address is neither to be confused with the device number on the DIP-switch nor with the IP-address.

To configure the interface you will need thorough knowledge of your companies network. Support by a network administrator will be necessary. Configuration of the interface is done by the software “ezTCP Manager” in directory „CSE_M53“ on your IXARO installation CD or from the IXARO website:

Program Icon of the ezTCP Manager:



The program starts with the following window:



Carry out a search for the interface with the button „search all“. All interfaces from the manufacturer Sollae Systems will be listed under „Search Results“. If there is more than one interface you can identify the one which shall be configured by the MAC address. Choose this one. Please enter the desired IP-Address and Subnet Mask of the interface. By pressing the button „WRITE“ the settings will be stored in the interface. The following confirmation should appear:



The network interface in the transmitter has now been configured successfully.



IXARO Solutions
Saarburger Ring 32
D-68229 Mannheim
Germany

T.....+49 621.14596
 +49 621.48 17 99 71
F.....+49 621.156 58 22
email...info@ixaro.com

www.ixaro.com